

Welcome to our  
Duke of Edinburgh Award 2024  
Expeditions  
Parent Information Evening



An ambitious school at the heart of the community

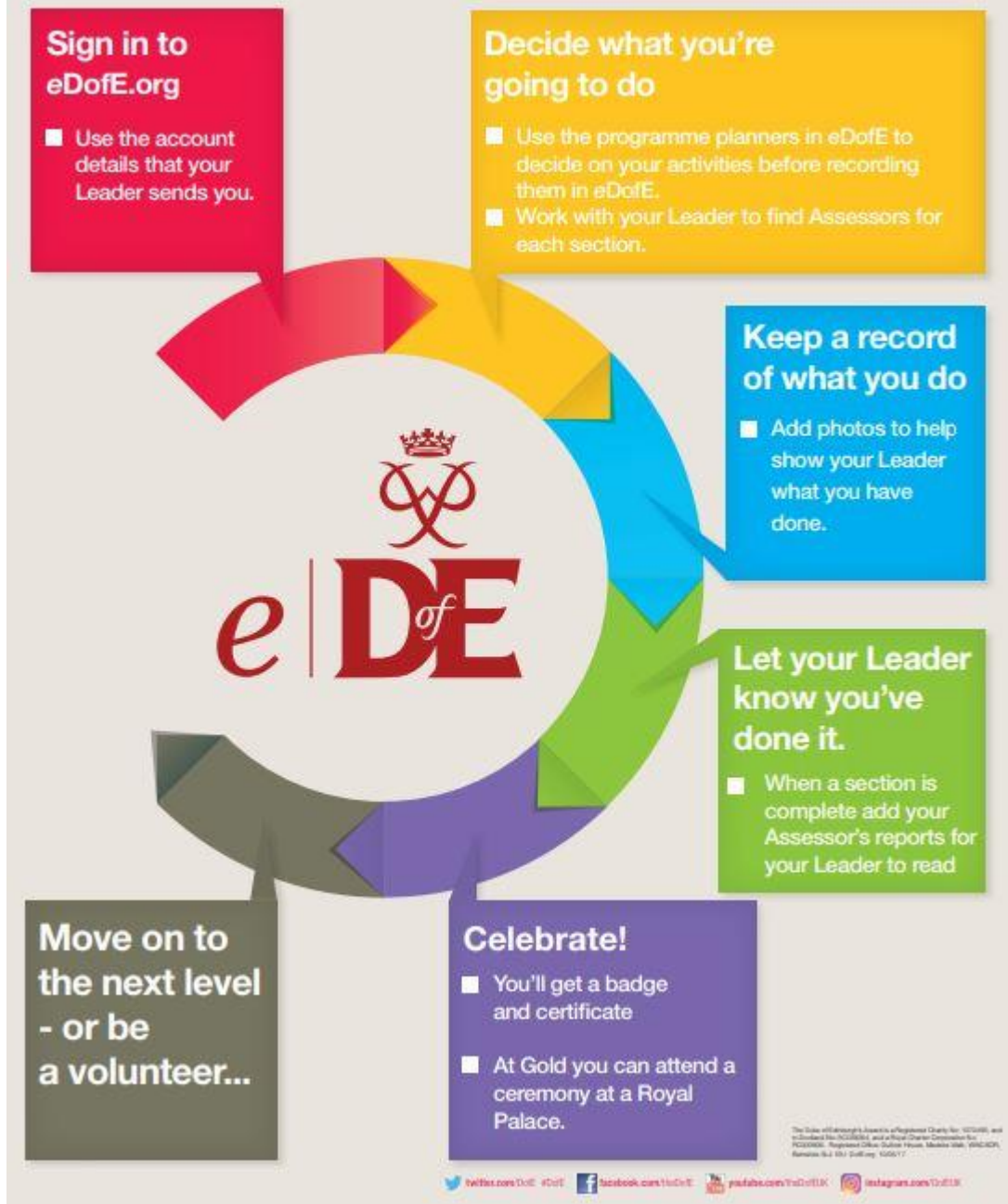
# The Duke of Edinburgh's Award

The award is not just about the expedition, it includes four sections of Volunteering, Physical, Skills and Expedition

**An ambitious school at the heart of the community**

The award is not just about the expedition, it includes four sections of:

- Volunteering
- Physical
- Skills
- Expedition



An ambitious school at the heart of the community

# Activity Sections & Timescales

Activities for each DofE section take a minimum of one hour a week over a set period of time, so they can be fitted in around academic study, hobbies and social lives.

Development and regular progress must be shown in **each** section.

## Bronze Award

- **Volunteering** – 3 Months
- **Physical** – 3 Months
- **Skills** – 3 Months
- **An additional 3 months must be spent on one of the Volunteering, Physical or Skills sections.**
- **2 x Expedition** – 2 Days/1 Night (Training & Qualifying)



An ambitious school at the heart of the community

# Activity Sections & Timescales

Activities for each DofE section take a minimum of one hour a week over a set period of time, so they can be fitted in around academic study, hobbies and social lives.

Development and regular progress must be shown in **each** section.

## Silver Award

- **Volunteering** – 6 Months
- **Physical** – 3 Months
- **Skills** – 3 Months
- **An additional 3 months must be spent on one of the Physical or Skills sections.**
- **2 x Expedition** – 3 Days/2 NightS (Training & Qualifying)

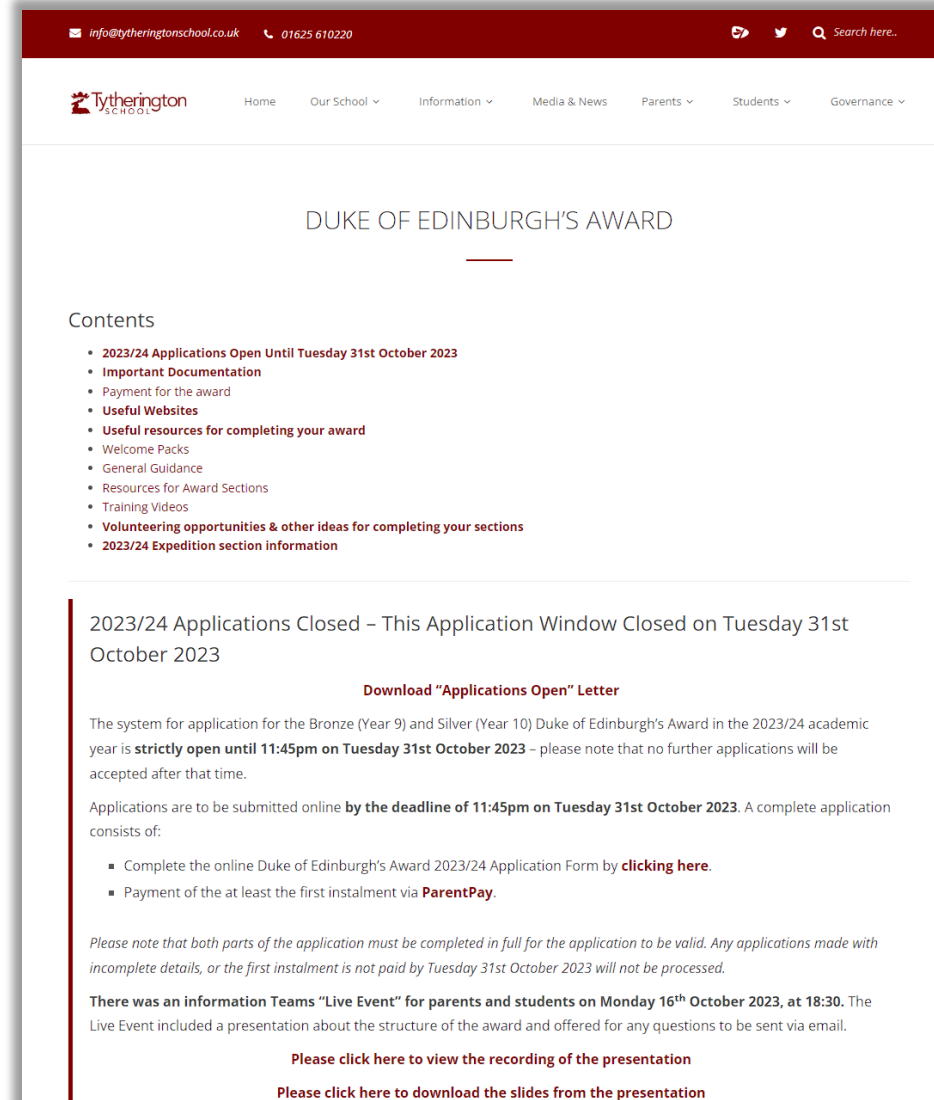


An ambitious school at the heart of the community

# Source of DofE Information & Resources

- Our DofE website provides you with all of the information that you need:
  - Important documentation
  - Useful websites and resources
  - Volunteering opportunities
  - Expedition information
- It can be accessed through our “Information” and “Students” menus, or directly through:

<http://www.tytheringtonschool.co.uk/information/duke-of-edinburgh-award/>



The screenshot shows the website's navigation menu with options like Home, Our School, Information, Media & News, Parents, Students, and Governance. The main heading is "DUKE OF EDINBURGH'S AWARD". Below it is a "Contents" list with items such as "2023/24 Applications Open Until Tuesday 31st October 2023", "Important Documentation", "Payment for the award", "Useful Websites", "Useful resources for completing your award", "Welcome Packs", "General Guidance", "Resources for Award Sections", "Training Videos", "Volunteering opportunities & other ideas for completing your sections", and "2023/24 Expedition section information". The main content area has a heading "2023/24 Applications Closed – This Application Window Closed on Tuesday 31st October 2023" and a sub-heading "Download 'Applications Open' Letter". The text explains that the application window is strictly open until 11:45pm on Tuesday 31st October 2023. It lists the steps for application: completing the online form and paying the first instalment via ParentPay. A note states that both parts must be completed in full for the application to be valid. There was a "Live Event" for parents and students on Monday 16th October 2023, at 18:30. Links are provided to view the recording of the presentation and to download the slides from the presentation.

An ambitious school at the heart of the community

# Source of DofE Information & Resources

- The “Useful resources for completing your award” contains guides and printable resources for completing each of the sections.
- It can be accessed through our “Information” and “Students” menus, or directly through:

<http://www.tytheringtonschool.co.uk/information/duke-of-edinburgh-award/#URfCA>

## Useful resources for completing your award

### Welcome Packs

The following are Zip files containing electronic copies of the contents of the DofE Award Welcome Packs:

- [Click here to Download](#) the **Bronze** Award Welcome Pack
- [Click here to Download](#) the **Silver** Award Welcome Pack

### General Guidance

Please feel free to download and use the following resources to support your independent completion of the award:

- **The eDofE Participant App** – Download the app from the Apple App Store or Google Play Store that makes managing your account very straightforward and uploading photos of evidence a breeze. There is a [video guide on YouTube](#) that helps understand how to use the App.
- **eDofE Participants FAQs** – Access 21 pieces of guidance regarding the use of the eDofE website or App.
- **DofE Award Timescales** – A visual guide to the minimum timescales for your completion of the award.
- **Guide to Writing an Assessor's Report** – A guide to give to your Assessors for each section to help them complete their report for you.

### Resources for Award Sections

The following table contains links and downloads that relate to each of the award sections:

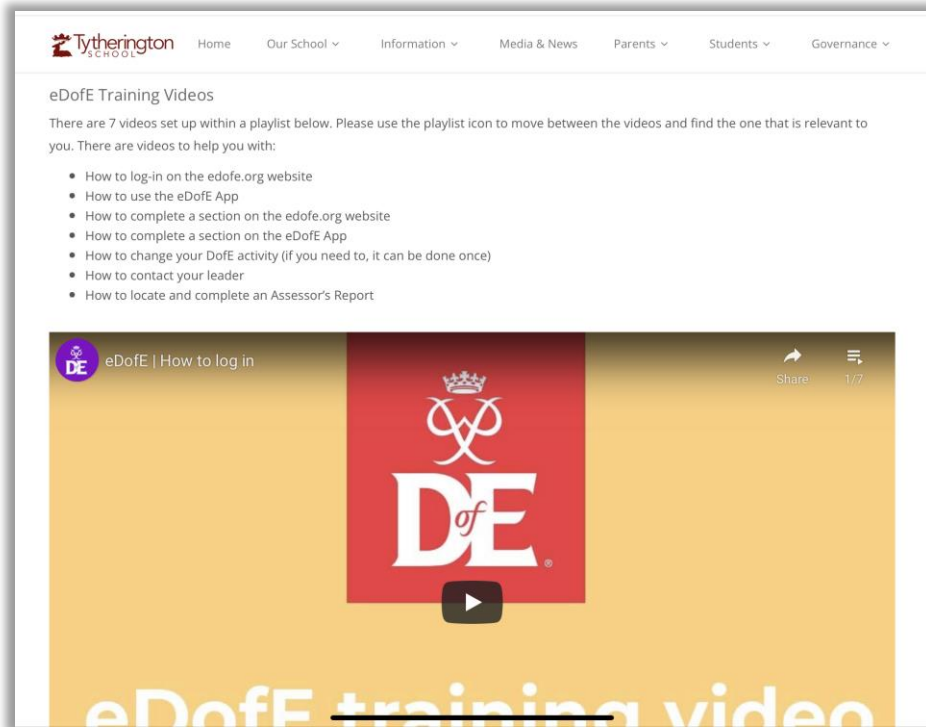
Resource	Volunteering Section	Physical Section	Skills Section	Expedition Section
<b>Programme Ideas</b> – Use this for ideas of what to do to complete the section and check if it meets requirements	<a href="#">Download Ideas Sheet</a>	<a href="#">Download Ideas Sheet</a>	<a href="#">Download Ideas Sheet</a>	N/A
<b>Programme Planner</b> – Use this to plan the activity for this section and then type/upload into eDofE	<a href="#">Download Planner</a>	<a href="#">Download Planner</a>	<a href="#">Download Planner</a>	N/A
<b>Activity Log</b> – Use this log to keep track of your hours spent on your section activity	<a href="#">Download Activity Log</a>	<a href="#">Download Activity Log</a>	<a href="#">Download Activity Log</a>	N/A
<b>Other Resources</b>	N/A	N/A	N/A	<b>20 Conditions of the Expedition Section</b>  <a href="#">Get Outside the Classroom DofE AS Expedition Handbook</a>  <a href="#">DofE Expedition Kit Tips and Guides</a>  <b>eDofE OS Mapping Guide</b> – A guide to using the Ordnance Survey Mapping tool within eDofE.  See below for further Expedition

An ambitious school at the heart of the community

# Making Progress Through the Award

- The guides found in the resources section provide step-by-step instructions.
- Training videos have also been added that show you what to do.
- The resources can be accessed through our “Information” and “Students” menus, or directly through:

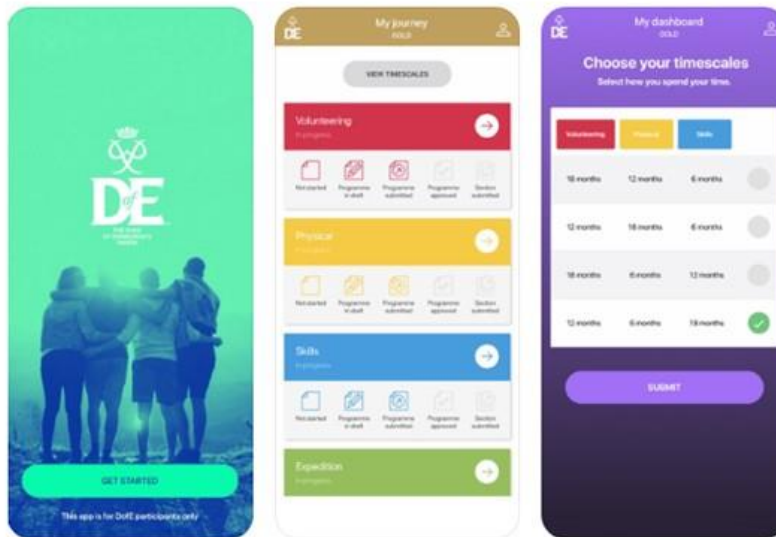
<http://www.tytheringtonschool.co.uk/information/duke-of-edinburgh-award/#URfCA>



An ambitious school at the heart of the community



# The DofE app



The DofE app is available for free from the App Store on iPhones and Google Play on Android phones.

Participants can use the DofE app to plan activities, get approval from Leaders, record evidence, submit programmes for completion and more.

Plus, it can sync important dates to your phone calendar and add the personalised DofE Card to the digital wallet, to make the most of the exclusive discounts.

**An ambitious school at the heart of the community**

# Discount Card



GOoutdoors.co.uk

**Extra  
10%**

off the  
GO Outdoors  
Discount Card price.

Inspiring everyone  
to get outdoors, for  
less... and love it as  
much as we do.



Blacks.co.uk

**15%**

off the current selling  
price. Includes reduced  
price items.

Proud to be a part  
of your outdoor life.



Millets.co.uk

**15%**

off the current selling  
price. Includes reduced  
price items.

The destination for  
family adventure.



Ultimateoutdoors.com

**15%**

off the current selling  
price. Includes reduced  
price items.

The number one  
destination for all  
things outdoors.



Tiso.com

**15%**

off the retail price.  
Scotland's leading  
specialist retailer for  
outdoor clothing,  
camping equipment  
and climbing gear.

**Always show your DofE Card or Voucher.  
You'll get the best savings and help support young people to do their DofE.**

An ambitious school at the heart of the community

# The Upcoming Expeditions

An ambitious school at the heart of the community

# Expectations & Assessment

- The highest standard of engagement and conduct is expected throughout the participation in the Award.
  - Our “Duke of Edinburgh Award 2023/24 – Terms & Conditions” can be found on our website:  
<http://www.tytheringtonschool.co.uk/information/duke-of-edinburgh-award/>
- With regard to the Expedition section, participant groups will be constantly assessed while training and on expedition.
  - As per DofE conditions, each group must take collective responsibility for any individual’s actions within their group.
  - As such, any breach of the DofE expectations by an individual may result in the whole group being subject to exclusion from the remainder of the training or expedition.




**An ambitious school at the heart of the community**

# Expectations & Assessment

- All participants must meet “The 20 Conditions of the Expedition Section” to be able to complete the award.
- The conditions can be accessed through the table within:

<http://www.tytheringtonschool.co.uk/information/duke-of-edinburgh-award/#URfCA>

		<b>The 20 Conditions of the Expedition section</b>	
<b>DofE qualifying expedition conditions</b>			
<b>Planning the expedition</b>	<b>1</b>	The team must plan and organise the expedition; all members of the team should be able to describe the role they have played in planning.	
	<b>2</b>	The expedition must have an aim. The aim can be set by the Leader at Bronze level only.	
	<b>3</b>	All participants must be within the qualifying age of the programme level and at the same Award level (i.e. not have completed the same or higher level of expedition).	
	<b>4</b>	There must be between four and seven participants in a team (eight for modes of travel which have tandem)	
	<b>5</b>	The expedition should take place in the recommended environment.	
	<b>6</b>	Accommodation must be by camping or other simple self-catering accommodation (e.g. camping barns or bunkhouses).	
	<b>7</b>	The expedition must be of the correct duration and meet the minimum hours of planned activity.	
<b>Training and practice</b>	<b>8</b>	All expeditions must be supervised by an adult (the Expedition Supervisor) who is able to accept responsibility for the safety of the team.	
	<b>9</b>	Assessment must be by an accredited Assessor. At Bronze level only, the Assessor may also be the Expedition Supervisor.	
	<b>10</b>	Expeditions will usually take place between the end of March and the end of October. They may take place outside this period, if so, non-camping accommodation options should be considered.	
	<b>11</b>	Participants must be adequately trained to safely undertake a remotely supervised expedition in the environment in which they will be operating.	
<b>During the expedition</b>	<b>12</b>	All expeditions must be by the participants' own physical effort, without motorised or outside assistance. Mobility aids may be used where appropriate to the needs of the participant.	
	<b>13</b>	All expeditions must be unaccompanied and self-sufficient. The team must be properly equipped, and supervision must be carried out remotely.	
	<b>14</b>	Teams must possess the necessary physical fitness, first aid and expedition skills required to complete their expedition safely.	
	<b>15</b>	Groups must adhere to a mobile phone use policy as agreed with their Expedition Supervisor and Assessor. This agreement should also include use of other electronic equipment.	
	<b>16</b>	Participants must behave responsibly with respect for their team members, Leaders, the public and animals.	
	<b>17</b>	Groups must understand and adhere to the Countryside /Scottish Outdoor Access, Highway and Water Sports Codes (as appropriate).	
<b>Post expedition</b>	<b>18</b>	Participants must plan an appropriate expedition menu, including cooking and eating a substantial hot meal on each day. This is optional on the final day.	
	<b>19</b>	Participants must actively participate in a debrief with their Assessor at the end of the expedition.	
	<b>20</b>	At Silver and Gold level, a presentation must be prepared and delivered after the expedition.	

**An ambitious school at the heart of the community**

# Expedition Weekends

Parents/carers must be available at all times during the course of expedition weekends.

## Practice Expedition

Friday 22<sup>nd</sup>,  
Saturday 23<sup>rd</sup> and  
Sunday 24<sup>th</sup> March  
2024

Friday 22<sup>nd</sup> March 2024 is for Year  
10 Silver ONLY

Details on the next slides and in  
the [respective expedition letters](#)

## Qualifying Expedition

Silver

Friday 17th to Sunday  
19th May 2024

Bronze

Saturday 6th & Sunday  
7th July 2024

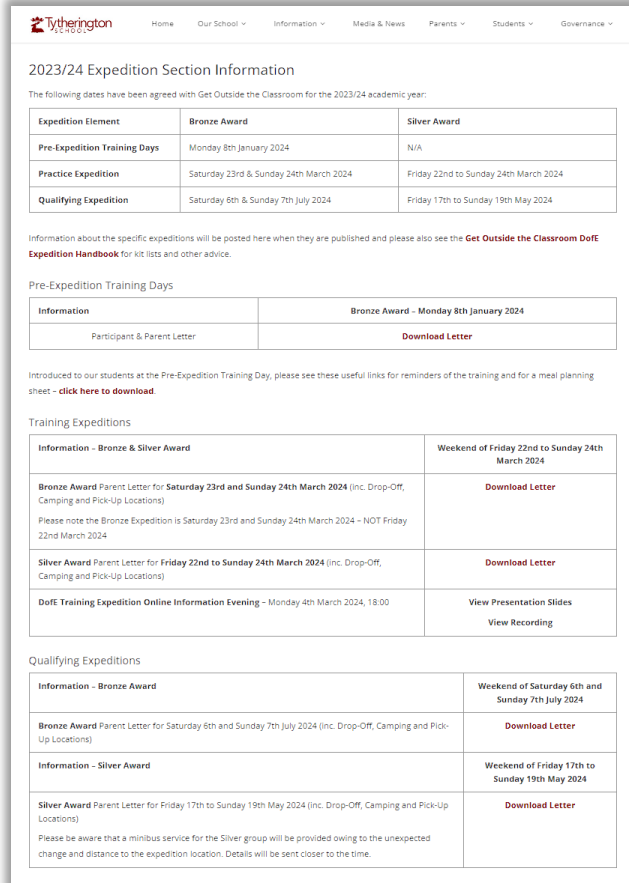
An ambitious school at the heart of the community

# Expedition Weekends

Parents/carers must be available at all times during the course of expedition weekends.

Please see the “2023/24 Expedition Section Information” section of the school DofE webpage for all details:

<https://tytheringtonschool.co.uk/information/duke-of-edinburgh-award/#ExpedInfo>



The screenshot shows the '2023/24 Expedition Section Information' page on the Tytherington School website. It includes a table of expedition elements and dates, a section for pre-expedition training days with a download link for a participant letter, and two tables for training and qualifying expeditions, each with download links for parent letters and presentation slides.

Expedition Element	Bronze Award	Silver Award
Pre-Expedition Training Days	Monday 8th January 2024	N/A
Practice Expedition	Saturday 23rd & Sunday 24th March 2024	Friday 22nd to Sunday 24th March 2024
Qualifying Expedition	Saturday 6th & Sunday 7th July 2024	Friday 17th to Sunday 19th May 2024

Information about the specific expeditions will be posted here when they are published and please also see the **Get Outside the Classroom DofE Expedition Handbook** for kit lists and other advice.

Pre-Expedition Training Days

Information	Bronze Award – Monday 8th January 2024
Participant & Parent Letter	<a href="#">Download Letter</a>

Introduced to our students at the Pre-Expedition Training Day, please see these useful links for reminders of the training and for a meal planning sheet – [click here to download](#)

Training Expeditions

Information – Bronze & Silver Award	Weekend of Friday 22nd to Sunday 24th March 2024
<b>Bronze Award</b> Parent Letter for <b>Saturday 23rd and Sunday 24th March 2024</b> (inc. Drop-Off, Camping and Pick-Up Locations) Please note the Bronze Expedition is Saturday 23rd and Sunday 24th March 2024 – NOT Friday 22nd March 2024	<a href="#">Download Letter</a>
<b>Silver Award</b> Parent Letter for <b>Friday 22nd to Sunday 24th March 2024</b> (inc. Drop-Off, Camping and Pick-Up Locations)	<a href="#">Download Letter</a>
<b>DofE Training Expedition Online Information Evening</b> – Monday 4th March 2024, 18:00	<a href="#">View Presentation Slides</a> <a href="#">View Recording</a>

Qualifying Expeditions

Information – Bronze Award	Weekend of Saturday 6th and Sunday 7th July 2024
<b>Bronze Award</b> Parent Letter for Saturday 6th and Sunday 7th July 2024 (inc. Drop-Off, Camping and Pick-Up Locations)	<a href="#">Download Letter</a>
Information – Silver Award	Weekend of Friday 17th to Sunday 19th May 2024
<b>Silver Award</b> Parent Letter for Friday 17th to Sunday 19th May 2024 (inc. Drop-Off, Camping and Pick-Up Locations) Please be aware that a minibus service for the Silver group will be provided owing to the unexpected change and distance to the expedition location. Details will be sent closer to the time.	<a href="#">Download Letter</a>

An ambitious school at the heart of the community

# Bronze Training Expedition

**Start/Drop-Off**  
**Saturday 23<sup>rd</sup> March 2024**  
**09:30**

**Whitefield Carpark,  
Delamere Forest, CW8 2JG**

**What3Words Location**  
[scanner.unlisted.lace](https://www.what3words.com/scanner.unlisted.lace)

**Overnight Camp**

**Forest Camp, Sandiway,  
CW8 2EA**

**What3Words Location**  
[nuzzling.watchdogs.enacts](https://www.what3words.com/nuzzling.watchdogs.enacts)

**Finish/Pick-Up**  
**Sunday 24<sup>th</sup> March 2024**  
**14.30 - 15.30**

**Tarporley Community Centre,  
CW6 0AY**

**What3Words Location**  
[unwound.mountains.otters](https://www.what3words.com/unwound.mountains.otters)



**An ambitious school at the heart of the community**



# Bronze Qualifying Expedition

**Start/Drop-Off**  
**Saturday 6<sup>th</sup> July 2024**  
**Wave 1: 09:15**  
**Wave 2: 09:45**

**Overnight Camp**

**Finish/Pick-Up**  
**Sunday 7<sup>th</sup> July 2024**  
**14.30 - 15.30**

Sound Heath Car Park,  
Newtown Rd, Broomhall,  
Nantwich, **CW5 8BX**

Willow Barn,  
Marbury, **SY13 4NB**

Alderford Lake, Tilstock Rd,  
Whitchurch, **SY13 3JQ**

**What3Words Location**  
[shrub.glorified.dollars](https://www.what3words.com/location/shrub.glorified.dollars)

**What3Words Location**  
[documents.shine.tallest](https://www.what3words.com/location/documents.shine.tallest)

**What3Words Location**  
[cheesy.reported.porridge](https://www.what3words.com/location/cheesy.reported.porridge)



**An ambitious school at the heart of the community**

# Silver Training Expedition

**Start Drop-Off & Overnight  
Camp 1  
Friday 22<sup>nd</sup> March 2024  
18:00**

Hardhurst Farm Campsite,  
Hope Valley, **S336 RB**

**What3Words Location**  
[momentous.logic.posting](https://www.what3words.com/momentous.logic.posting)



**Overnight Camp 2**

Newfold Farm Campsite,  
Grindsbrook Booth, Hope  
Valley, **S33 7ZD**

**What3Words Location**  
[dozens.blazing.coasting](https://www.what3words.com/dozens.blazing.coasting)



**Finish/Pick-Up  
Sunday 24<sup>th</sup> March 2024  
14.30 - 15.30**

Hayfield Countryside Centre,  
Station Road, Hayfield,  
**SK22 2ES**

**What3Words Location**  
[difficult.savers.laptops](https://www.what3words.com/difficult.savers.laptops)



**An ambitious school at the heart of the community**

# Silver Qualifying Expedition

**Drop-Off & Pick-Up**

**Friday 17<sup>th</sup> & Sunday 19<sup>th</sup>**

**May 2024**

**07:45 & Call on Return**

**Overnight Camp 1**

**Overnight Camp 2**

Southbound Sandbach  
Services, M6, **CW11 2FZ**

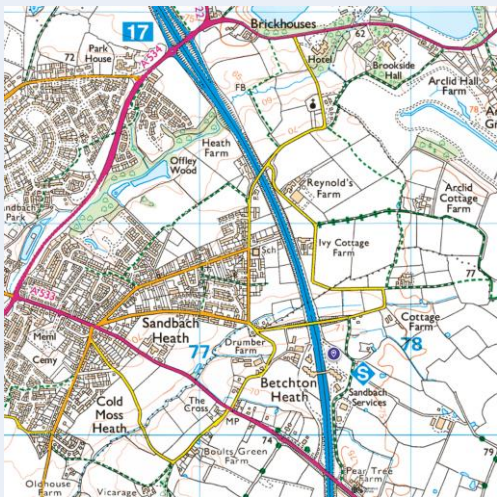
**What3Words Location**  
[slings.scoop.scribble](https://www.what3words.com/slings.scoop.scribble)

Llyn Rhys Farm, **LL11 3AF**

**What3Words Location**  
[august.extent.giant](https://www.what3words.com/august.extent.giant)

Station Campsite, Carrog,  
**LL21 9BD**

**What3Words Location**  
[remarks.rant.tunes](https://www.what3words.com/remarks.rant.tunes)



**An ambitious school at the heart of the community**

# Expedition Equipment & Support

- A logo'd expedition t-shirt is included in the sign-up charge.
- Get Outside the Classroom will provide the following group kit:
  - 3-Person Tents
  - Trangia Stove (inc. cooking pans)
  - Stove Fuel
- Please see kit list within the [Get Outside the Classroom DofE A5 Expedition Handbook](#), available through:

<http://www.tytheringtonschool.co.uk/information/duke-of-edinburgh-award/#ExpedInfo>



Get Outside the Classroom can loan a 65 Litre Rucksack and/or Sleeping Mat for those that would like to borrow one. If you do wish to borrow either of these pieces of equipment, [please complete this online form.](#)

You will be given the items at the point of being dropped off and will therefore need to bring all other items of the kit list to then pack them before beginning the expedition.

**An ambitious school at the heart of the community**

# To Do

- Please carefully and fully read through the [respective expedition letters](#) that contains details of drop-off, overnight camping and pick-up locations.
- Please carefully and fully read through the [GOtC Expedition Handbook](#) that contains a kit list for the expedition and advice on clothing, packing and fitting a rucksack, food, water, equipment use and safety information.
- [Please complete the online form](#) if you wish to borrow a 65 Litre Rucksack or Sleeping Mat.
- Organise organise lift-sharing for drop-off and pick-up where you wish to do so.



Thank you for attending our  
Duke of Edinburgh Award 2024  
Expeditions  
Parent Information Evening



An ambitious school at the heart of the community