

Welcome to our
Duke of Edinburgh Award 2025
Expeditions
Parent Information Evening



An ambitious school at the heart of the community

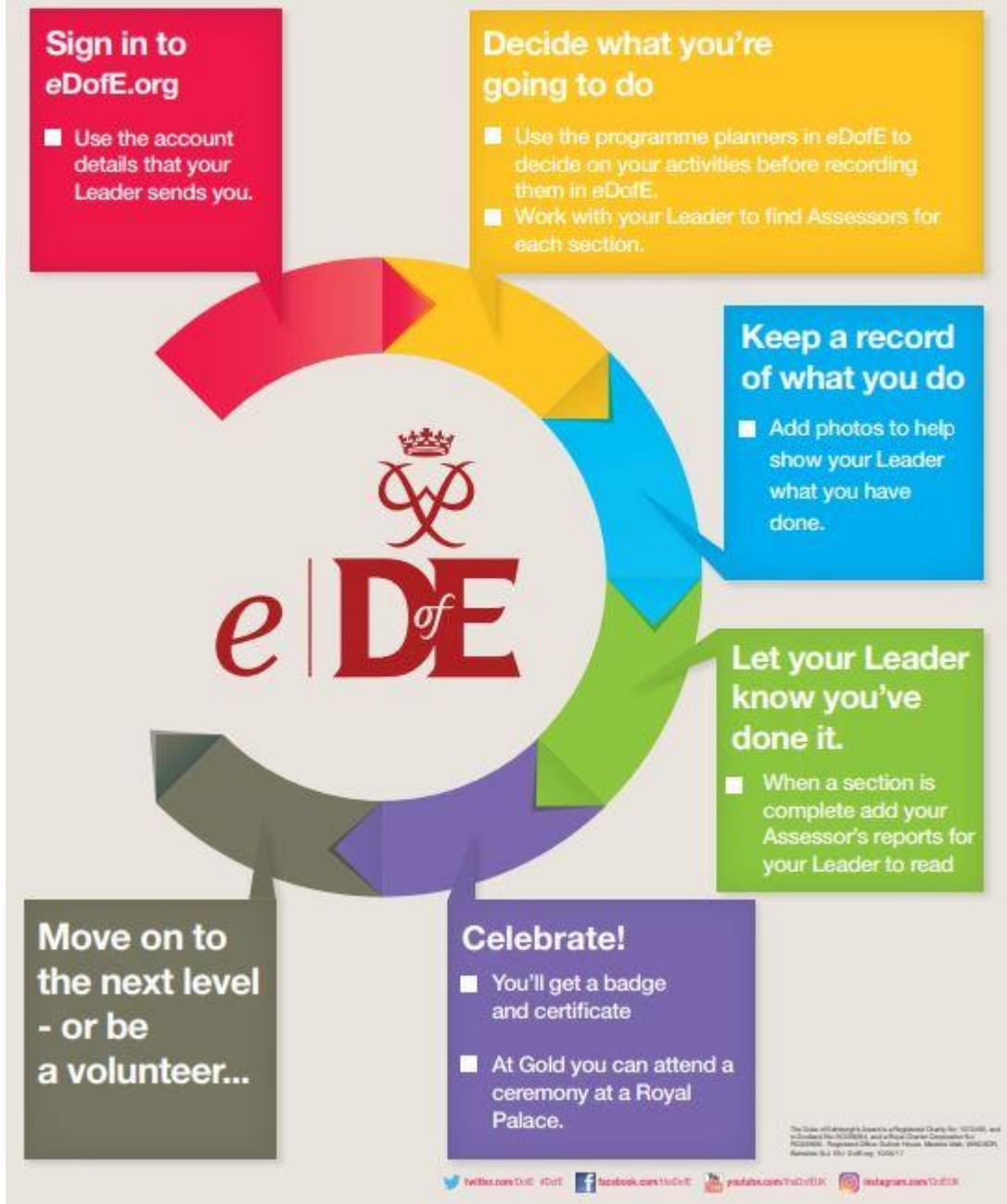
The Duke of Edinburgh's Award

The award is not just about the expedition, it includes four sections of Volunteering, Physical, Skills and Expedition

An ambitious school at the heart of the community

The award is not just about the expedition, it includes four sections of:

- Volunteering
- Physical
- Skills
- Expedition



An ambitious school at the heart of the community

Activity Sections & Timescales

Activities for each DofE section take a minimum of one hour a week over a set period of time, so they can be fitted in around academic study, hobbies and social lives.

Development and regular progress must be shown in **each** section.

Bronze Award

- **Volunteering** – 3 Months
- **Physical** – 3 Months
- **Skills** – 3 Months
- **An additional 3 months must be spent on one of the Volunteering, Physical or Skills sections.**
- **2 x Expedition** – 2 Days/1 Night (Training & Qualifying)



An ambitious school at the heart of the community

Activity Sections & Timescales

Activities for each DofE section take a minimum of one hour a week over a set period of time, so they can be fitted in around academic study, hobbies and social lives.

Development and regular progress must be shown in **each** section.

Silver Award

- **Volunteering** – 6 Months
- **Physical** – 3 Months
- **Skills** – 3 Months
- **An additional 3 months must be spent on one of the Physical or Skills sections.**
- **2 x Expedition** – 3 Days/2 NightS (Training & Qualifying)

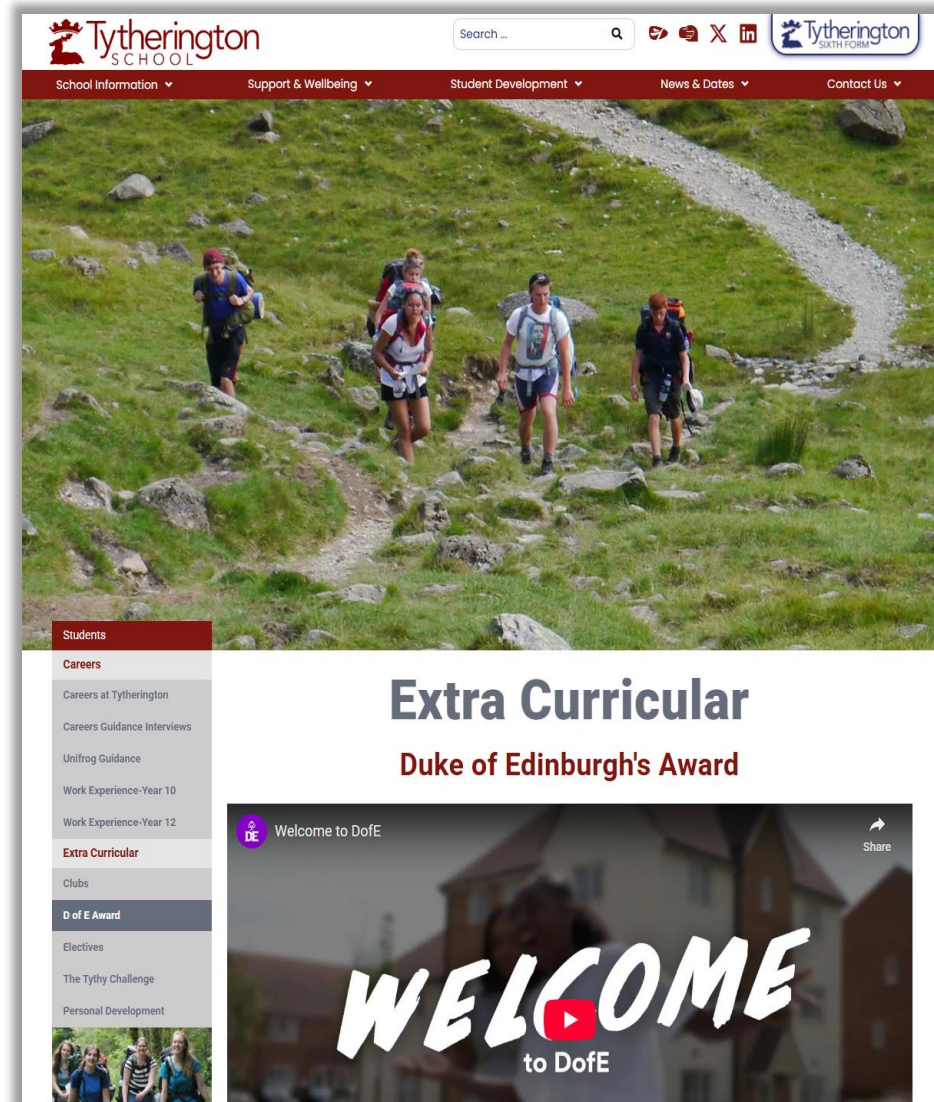


An ambitious school at the heart of the community

Source of DofE Information & Resources

- Our DofE website provides you with all of the information that you need:
 - Important documentation
 - Useful websites and resources
 - Volunteering opportunities
 - Expedition information
- It can be accessed through our “Student Development” and “D of E Award” menus, or directly through:

<https://tytheringtonschool.co.uk/home/d-of-e-award/>



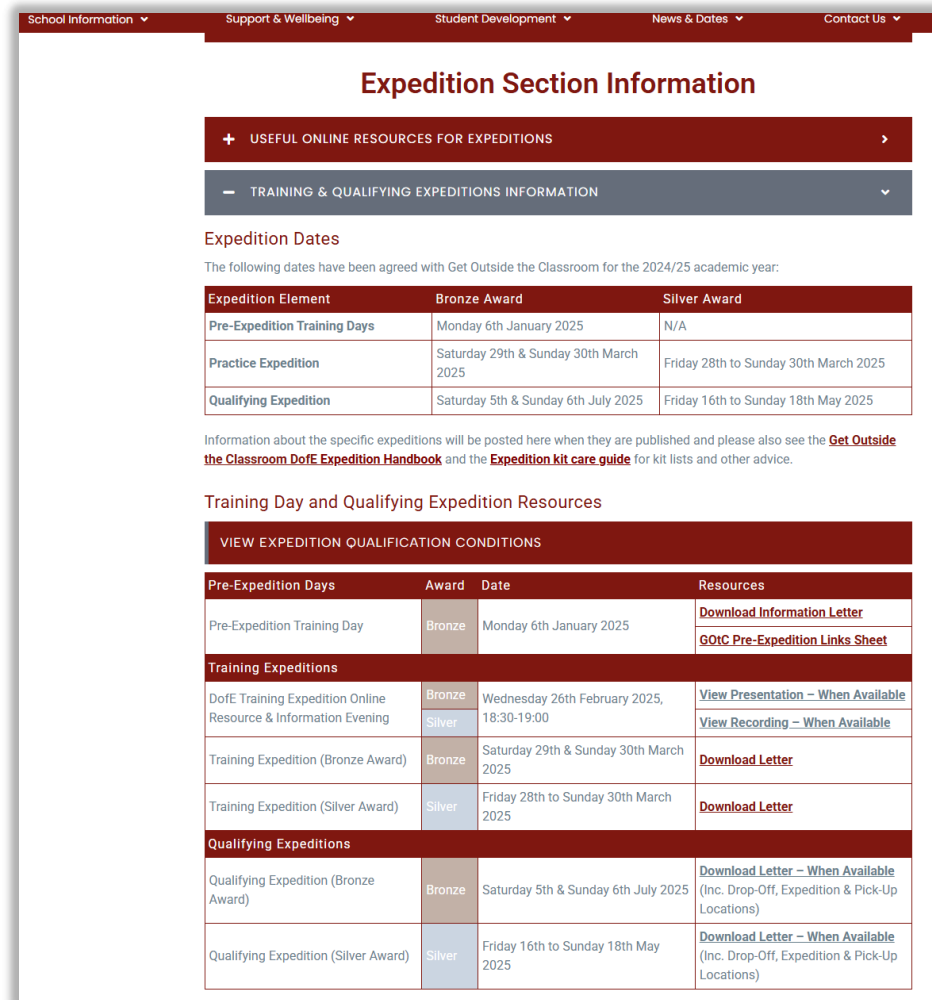
The screenshot shows the Tytherington School website. The top navigation bar includes 'School Information', 'Support & Wellbeing', 'Student Development', 'News & Dates', and 'Contact Us'. A search bar is located in the top right. The main content area features a large image of students hiking on a rocky trail. Below this image is a sidebar menu with categories: Students, Careers, Extra Curricular, Clubs, D of E Award, Electives, The Tythy Challenge, and Personal Development. The 'D of E Award' category is highlighted. The main content area displays the text 'Extra Curricular' and 'Duke of Edinburgh's Award'. Below this is a video player with the text 'WELCOME to DofE' and a red play button icon.

An ambitious school at the heart of the community

Source of DofE Information & Resources

- The “Useful resources for completing your award” contains guides and printable resources for completing each of the sections.
- It can be accessed through our “Student Development” and “D of E Award” menus, or directly through:

<https://tytheringtonschool.co.uk/home/d-of-e-award/>



Expedition Section Information

+ USEFUL ONLINE RESOURCES FOR EXPEDITIONS

- TRAINING & QUALIFYING EXPEDITIONS INFORMATION

Expedition Dates

The following dates have been agreed with Get Outside the Classroom for the 2024/25 academic year:

Expedition Element	Bronze Award	Silver Award
Pre-Expedition Training Days	Monday 6th January 2025	N/A
Practice Expedition	Saturday 29th & Sunday 30th March 2025	Friday 28th to Sunday 30th March 2025
Qualifying Expedition	Saturday 5th & Sunday 6th July 2025	Friday 16th to Sunday 18th May 2025

Information about the specific expeditions will be posted here when they are published and please also see the [Get Outside the Classroom DofE Expedition Handbook](#) and the [Expedition kit care guide](#) for kit lists and other advice.

Training Day and Qualifying Expedition Resources

VIEW EXPEDITION QUALIFICATION CONDITIONS

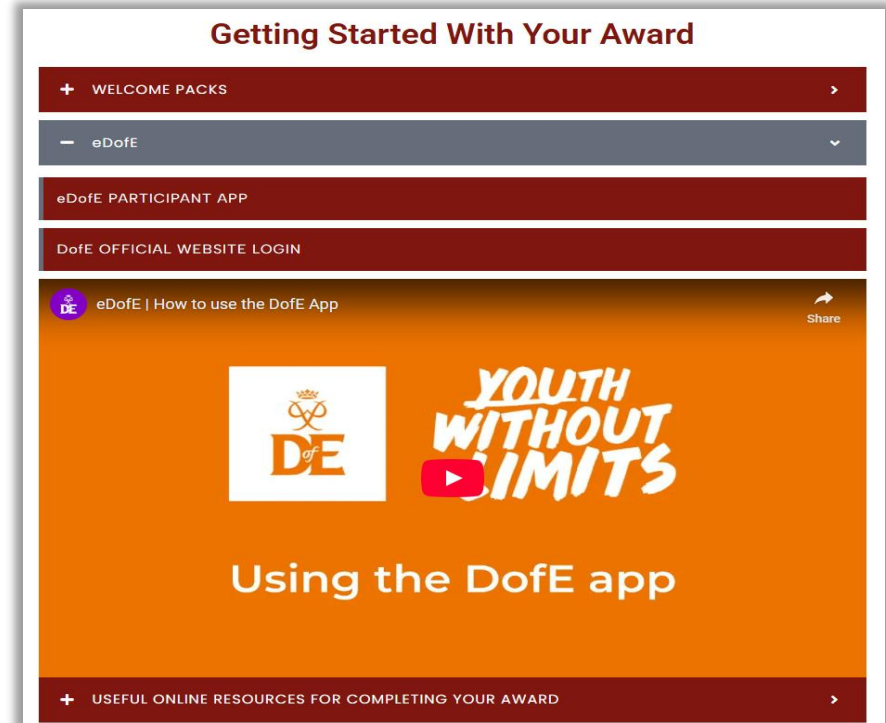
Pre-Expedition Days	Award	Date	Resources
Pre-Expedition Training Day	Bronze	Monday 6th January 2025	Download Information Letter GOTC Pre-Expedition Links Sheet
Training Expeditions			
DofE Training Expedition Online Resource & Information Evening	Bronze	Wednesday 26th February 2025, 18:30-19:00	View Presentation – When Available
	Silver		View Recording – When Available
Training Expedition (Bronze Award)	Bronze	Saturday 29th & Sunday 30th March 2025	Download Letter
Training Expedition (Silver Award)	Silver	Friday 28th to Sunday 30th March 2025	Download Letter
Qualifying Expeditions			
Qualifying Expedition (Bronze Award)	Bronze	Saturday 5th & Sunday 6th July 2025	Download Letter – When Available (Inc. Drop-Off, Expedition & Pick-Up Locations)
Qualifying Expedition (Silver Award)	Silver	Friday 16th to Sunday 18th May 2025	Download Letter – When Available (Inc. Drop-Off, Expedition & Pick-Up Locations)

An ambitious school at the heart of the community

Making Progress Through the Award

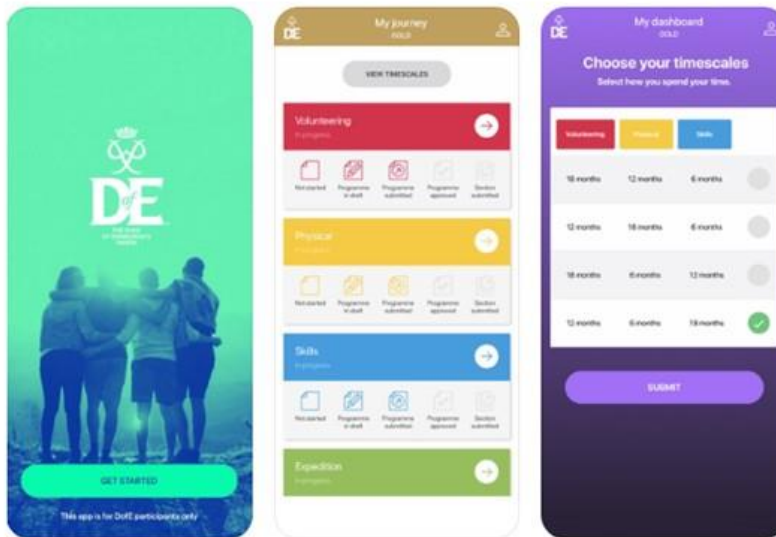
- The guides found in the resources section provide step-by-step instructions.
- Training videos have also been added that show you what to do.
- It can be accessed through our “Student Development” and “D of E Award” menus, or directly through:

<https://tytheringtonschool.co.uk/home/d-of-e-award/>



An ambitious school at the heart of the community

The DofE app



The DofE app is available for free from the App Store on iPhones and Google Play on Android phones.

Participants can use the DofE app to plan activities, get approval from Leaders, record evidence, submit programmes for completion and more.

Plus, it can sync important dates to your phone calendar and add the personalised DofE Card to the digital wallet, to make the most of the exclusive discounts.

An ambitious school at the heart of the community

Discount Card



GOoutdoors.co.uk

**Extra
10%**

off the
GO Outdoors
Discount Card price.

Inspiring everyone
to get outdoors, for
less... and love it as
much as we do.



Blacks.co.uk

15%
off the current selling
price. Includes reduced
price items.

Proud to be a part
of your outdoor life.



Millets.co.uk

15%
off the current selling
price. Includes reduced
price items.

The destination for
family adventure.



Ultimateoutdoors.com

15%
off the current selling
price. Includes reduced
price items.

The number one
destination for all
things outdoors.



Geared up for the outdoors

Tiso.com

15%
off the retail price.

Scotland's leading
specialist retailer for
outdoor clothing,
camping equipment
and climbing gear.

**Always show your DofE Card or Voucher.
You'll get the best savings and help support young people to do their DofE.**

An ambitious school at the heart of the community

The Upcoming Expeditions

An ambitious school at the heart of the community

Expectations & Assessment

- The highest standard of engagement and conduct is expected throughout the participation in the Award.
 - Our “Duke of Edinburgh Award 2024/25 – Terms & Conditions” can be found on our website:
<https://tytheringtonschool.co.uk/home/d-of-e-award/>
- With regard to the Expedition section, participant groups will be constantly assessed while training and on expedition.
 - As per DofE conditions, each group must take collective responsibility for any individual’s actions within their group.
 - As such, any breach of the DofE expectations by an individual may result in the whole group being subject to exclusion from the remainder of the training or expedition.



An ambitious school at the heart of the community

Expectations & Assessment

- All participants must meet “The 20 Conditions of the Expedition Section” to be able to complete the award.
- The conditions can be accessed within:

<https://tytheringtonschool.co.uk/home/d-of-e-award/>



The 20 Conditions of the Expedition section

DofE qualifying expedition conditions				
Planning the expedition	1 The team must plan and organise the expedition; all members of the team should be able to describe the role they have played in planning.			
	2 The expedition must have an aim. The aim can be set by the Leader at Bronze level only.			
	3 All participants must be within the qualifying age of the programme level and at the same Award level (i.e. not have completed the same or higher level of expedition).			
	4 There must be between four and seven participants in a team (eight for modes of travel which have tandem)			
	5 The expedition should take place in the recommended environment. <table border="1" style="width: 100%; border-collapse: collapse;"> <tr> <td style="width: 33%; border: 1px solid red; padding: 2px;">Bronze: Expeditions should be in normal rural countryside – familiar and local to groups.</td> <td style="width: 33%; border: 1px solid grey; padding: 2px;">Silver: Expeditions should be in normal rural, open countryside or forest – unfamiliar to groups.</td> <td style="width: 33%; border: 1px solid gold; padding: 2px;">Gold: Expeditions should be in wild country (remote from habitation) which is unfamiliar to groups.</td> </tr> </table>	Bronze: Expeditions should be in normal rural countryside – familiar and local to groups.	Silver: Expeditions should be in normal rural, open countryside or forest – unfamiliar to groups.	Gold: Expeditions should be in wild country (remote from habitation) which is unfamiliar to groups.
	Bronze: Expeditions should be in normal rural countryside – familiar and local to groups.	Silver: Expeditions should be in normal rural, open countryside or forest – unfamiliar to groups.	Gold: Expeditions should be in wild country (remote from habitation) which is unfamiliar to groups.	
	6 Accommodation must be by camping or other simple self-catering accommodation (e.g. camping barns or bunkhouses).			
7 The expedition must be of the correct duration and meet the minimum hours of planned activity. <table border="1" style="width: 100%; border-collapse: collapse;"> <tr> <td style="width: 33%; border: 1px solid red; padding: 2px;">Bronze: A minimum of 2 days, 1 night; 6 hours planned activity each day.</td> <td style="width: 33%; border: 1px solid grey; padding: 2px;">Silver: A minimum of 3 days, 2 nights; 7 hours planned activity each day.</td> <td style="width: 33%; border: 1px solid gold; padding: 2px;">Gold: A minimum of 4 days, 3 nights; 8 hours planned activity each day.</td> </tr> </table>	Bronze: A minimum of 2 days, 1 night; 6 hours planned activity each day.	Silver: A minimum of 3 days, 2 nights; 7 hours planned activity each day.	Gold: A minimum of 4 days, 3 nights; 8 hours planned activity each day.	
Bronze: A minimum of 2 days, 1 night; 6 hours planned activity each day.	Silver: A minimum of 3 days, 2 nights; 7 hours planned activity each day.	Gold: A minimum of 4 days, 3 nights; 8 hours planned activity each day.		
8 All expeditions must be supervised by an adult (the Expedition Supervisor) who is able to accept responsibility for the safety of the team.				
9 Assessment must be by an accredited Assessor. At Bronze level only, the Assessor may also be the Expedition Supervisor.				
10 Expeditions will usually take place between the end of March and the end of October. They may take place outside this period, if so, non-camping accommodation options should be considered.				
Training and practice	11 Participants must be adequately trained to safely undertake a remotely supervised expedition in the environment in which they will be operating. <table border="1" style="width: 100%; border-collapse: collapse;"> <tr> <td style="width: 33%; border: 1px solid red; padding: 2px;">Bronze: Teams must complete the required training.</td> <td style="width: 33%; border: 1px solid grey; padding: 2px;">Silver: Teams must complete the required training and a practice expedition of a minimum 2 days, 2 nights.</td> <td style="width: 33%; border: 1px solid gold; padding: 2px;">Gold: Teams must complete the required training and a practice expedition of a minimum 2 days, 2 nights.</td> </tr> </table>	Bronze: Teams must complete the required training.	Silver: Teams must complete the required training and a practice expedition of a minimum 2 days, 2 nights.	Gold: Teams must complete the required training and a practice expedition of a minimum 2 days, 2 nights.
	Bronze: Teams must complete the required training.	Silver: Teams must complete the required training and a practice expedition of a minimum 2 days, 2 nights.	Gold: Teams must complete the required training and a practice expedition of a minimum 2 days, 2 nights.	
12 All expeditions must be by the participants' own physical effort, without motorised or outside assistance. Mobility aids may be used where appropriate to the needs of the participant.				
During the expedition	13 All expeditions must be unaccompanied and self-sufficient. The team must be properly equipped, and supervision must be carried out remotely.			
	14 Teams must possess the necessary physical fitness, first aid and expedition skills required to complete their expedition safely.			
	15 Groups must adhere to a mobile phone use policy as agreed with their Expedition Supervisor and Assessor. This agreement should also include use of other electronic equipment.			
	16 Participants must behave responsibly with respect for their team members, Leaders, the public and animals.			
	17 Groups must understand and adhere to the Countryside /Scottish Outdoor Access, Highway and Water Sports Codes (as appropriate).			
	18 Participants must plan an appropriate expedition menu, including cooking and eating a substantial hot meal on each day. This is optional on the final day.			
Post expedition	19 Participants must actively participate in a debrief with their Assessor at the end of the expedition.			
	20 At Silver and Gold level, a presentation must be prepared and delivered after the expedition.			

The Duke of Edinburgh's Award is a Registered Charity No: 1072490, and in Scotland No: SC038254, and a Royal Charter Corporation No: RC000006. Registered Office: Gulliver House, Madiera Walk, WINDSOR, Berkshire SL4 1EU 05/03/19 DW

DofE.org

An ambitious school at the heart of the community

Expedition Weekends

Parents/carers must be available at all times during the course of expedition weekends.

Practice Expedition

Friday 28th (evening),
Saturday 29th and
Sunday 30th March
2025

Friday 28th March 2025 is for Year
10 Silver ONLY

Details on the next slides and in
the [respective expedition letters](#)

Qualifying Expedition

Silver

Friday 16th to Sunday
18th May 2025

Bronze

Saturday 5th & Sunday
6th July 2025

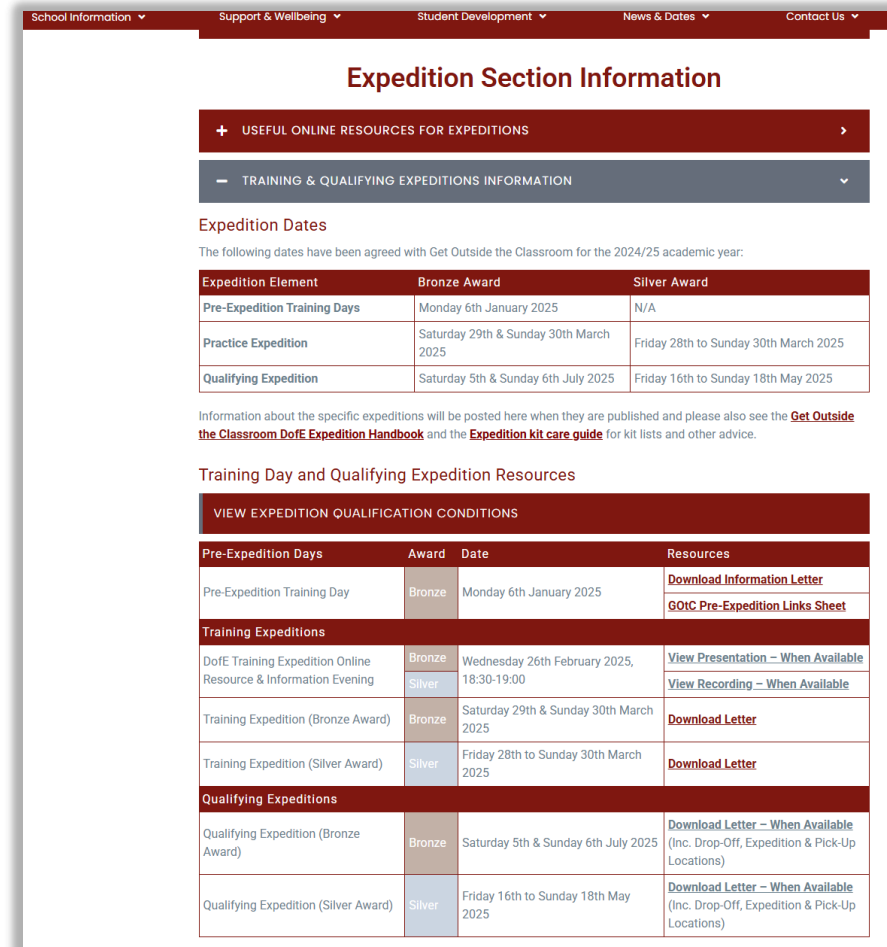
An ambitious school at the heart of the community

Expedition Weekends

Parents/carers must be available at all times during the course of expedition weekends.

Please see the “Expedition Section Information” section of the school DofE webpage for all details:

<https://tytheringtonschool.co.uk/home/d-of-e-award/>



The screenshot shows the 'Expedition Section Information' page on the school's website. It includes a navigation menu at the top, a section for 'USEFUL ONLINE RESOURCES FOR EXPEDITIONS', and a section for 'TRAINING & QUALIFYING EXPEDITIONS INFORMATION'. The 'Expedition Dates' section lists dates for Pre-Expedition Training Days, Practice Expedition, and Qualifying Expedition for Bronze and Silver awards. Below this is a table for 'VIEW EXPEDITION QUALIFICATION CONDITIONS' with columns for Pre-Expedition Days, Award, Date, and Resources. The table lists various training and expedition activities with links to download letters and view presentations.

Expedition Element	Bronze Award	Silver Award
Pre-Expedition Training Days	Monday 6th January 2025	N/A
Practice Expedition	Saturday 29th & Sunday 30th March 2025	Friday 28th to Sunday 30th March 2025
Qualifying Expedition	Saturday 5th & Sunday 6th July 2025	Friday 16th to Sunday 18th May 2025

Pre-Expedition Days	Award	Date	Resources
Pre-Expedition Training Day	Bronze	Monday 6th January 2025	Download Information Letter GOTC Pre-Expedition Links Sheet
Training Expeditions	Bronze	Wednesday 26th February 2025, 18:30-19:00	View Presentation – When Available
	Silver	Wednesday 26th February 2025, 18:30-19:00	View Recording – When Available
Training Expedition (Bronze Award)	Bronze	Saturday 29th & Sunday 30th March 2025	Download Letter
Training Expedition (Silver Award)	Silver	Friday 28th to Sunday 30th March 2025	Download Letter
Qualifying Expeditions	Bronze	Saturday 5th & Sunday 6th July 2025	Download Letter – When Available (Inc. Drop-Off, Expedition & Pick-Up Locations)
	Silver	Friday 16th to Sunday 18th May 2025	Download Letter – When Available (Inc. Drop-Off, Expedition & Pick-Up Locations)

An ambitious school at the heart of the community

Bronze Training Expedition

Start/Drop-Off
Saturday 29th March 2025
10:00

Whitefield Carpark,
Delamere Forest, **CW8 2JG**

What3Words Location
[scanner.unlisted.lace](https://www.what3words.com/scanner.unlisted.lace)

Overnight Camp

Forest Camp, Sandiway,
CW8 2EA

What3Words Location
[nuzzling.watchdogs.enacts](https://www.what3words.com/nuzzling.watchdogs.enacts)

Finish/Pick-Up
Sunday 30th March 2025
14.30 - 15.30

Tarporley Community Centre,
CW6 0AY

What3Words Location
[unwound.mountains.otters](https://www.what3words.com/unwound.mountains.otters)



An ambitious school at the heart of the community

Bronze Qualifying Expedition

Start/Drop-Off
Saturday 6th July 2024
Wave 1: 09:15
Wave 2: 09:45

Overnight Camp

Finish/Pick-Up
Sunday 7th July 2024
14.30 - 15.30

Tarporley Community Centre,
CW6 0AY

Broad Oak Campsite,
Birds Ln, Chester,
CH3 9NL

Morris Dancer Pub, Chester
Rd, Kelsall, Tarporley, CW6
0RZ

What3Words Location
[unwound.mountains.otters](https://www.what3words.com/unwound.mountains.otters)

What3Words Location
[beards.fruits.birds](https://www.what3words.com/beards.fruits.birds)

What3Words Location
[recovery.originate.tradition](https://www.what3words.com/recovery.originate.tradition)



An ambitious school at the heart of the community

Silver Training Expedition

**Start Drop-Off & Overnight
Camp 1
Friday 28th March 2025
18:00**

Seven Springs Campsite,
Corks Ln, Disley, Stockport,
SK12 2AZ

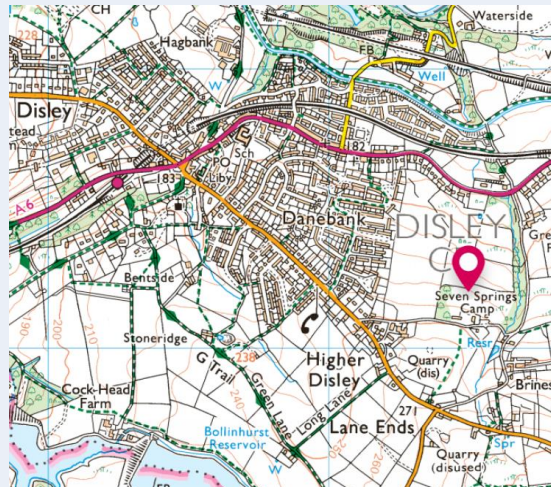
What3Words Location
[translated.whizzing.flux](https://www.what3words.com/translated.whizzing.flux)



Overnight Camp 2

Seven Springs Campsite,
Corks Ln, Disley, Stockport,
SK12 2AZ

What3Words Location
[translated.whizzing.flux](https://www.what3words.com/translated.whizzing.flux)



**Finish/Pick-Up
Sunday 24th March 2024
14.30 - 15.30**

Adlington Rd Car Park,
Adlington Rd, Bollington,
Macclesfield, **SK10 5JT**

What3Words Location
[airports.tadpoles.finely](https://www.what3words.com/airports.tadpoles.finely)



An ambitious school at the heart of the community

Silver Qualifying Expedition

Drop-Off & Pick-Up

Friday 16th & Sunday 18th

May 2025

07:45 & Call on Return

Overnight Camp 1

Overnight Camp 2

Southbound Sandbach
Services, M6, **CW11 2FZ**

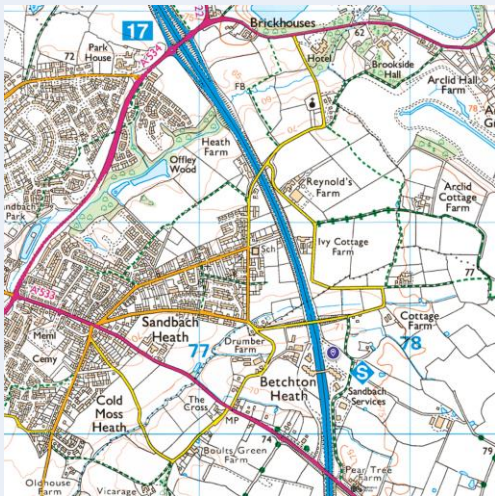
What3Words Location
[slings.scoop.scribble](https://www.what3words.com/slings.scoop.scribble)

Station Campsite, Carrog,
LL21 9BD

What3Words Location
[remarks.rant.tunes](https://www.what3words.com/remarks.rant.tunes)

Llyn Rhys Farm, **LL11 3AF**

What3Words Location
[august.extent.giant](https://www.what3words.com/august.extent.giant)



An ambitious school at the heart of the community

Expedition Equipment & Support

- A logo'd expedition t-shirt is included in the sign-up charge.
- Get Outside the Classroom will provide the following group kit:
 - 3-Person Tents
 - Trangia Stove (inc. cooking pans)
 - Stove Fuel
- Please see kit list within the [Get Outside the Classroom DofE A5 Expedition Handbook](#), available through:

<https://tytheringtonschool.co.uk/home/d-of-e-award/>



Get Outside the Classroom can loan a 65 Litre Rucksack and/or Sleeping Mat for those that would like to borrow one. If you do wish to borrow either of these pieces of equipment, [please complete this online form.](#)

You will be given the items at the point of being dropped off and will therefore need to bring all other items of the kit list to then pack them before beginning the expedition.

An ambitious school at the heart of the community

To Do

- Please carefully and fully read through the [respective expedition letters](#) that contains details of drop-off, overnight camping and pick-up locations.
- Please carefully and fully read through the [GOTC Expedition Handbook](#) that contains a kit list for the expedition and advice on clothing, packing and fitting a rucksack, food, water, equipment use and safety information.
- [Please complete the online form](#) by the end of Friday 7th March 2025 if you wish to borrow a 65 Litre Rucksack or Sleeping Mat.
- Organise lift-sharing for drop-off and pick-up where you wish to do so.



Thank you for attending our
Duke of Edinburgh Award 2025
Expeditions
Parent Information Evening



Please email me if you have any questions – apilbury@tytheringtonschool.co.uk

An ambitious school at the heart of the community